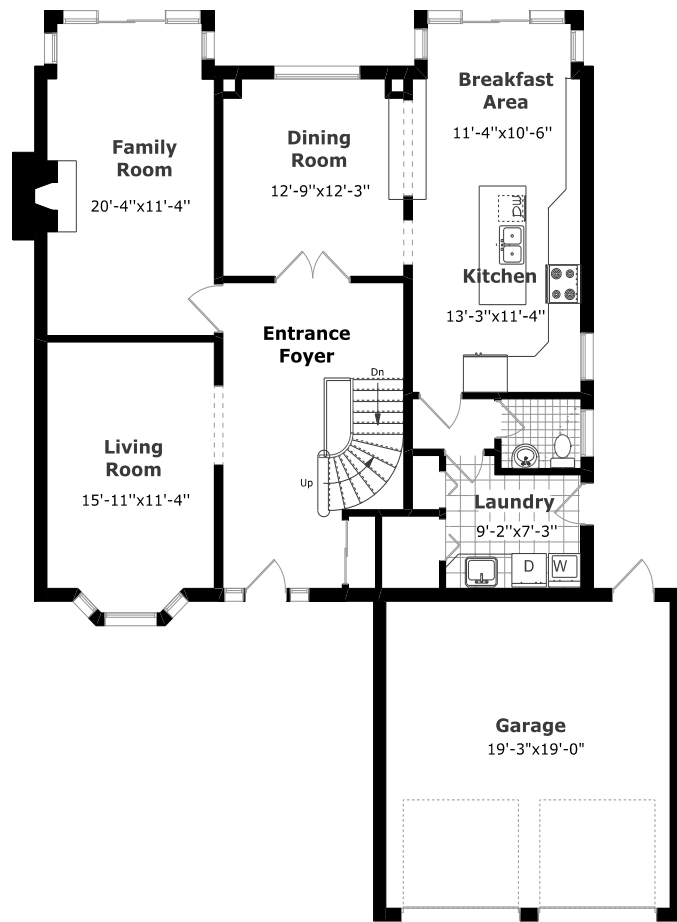
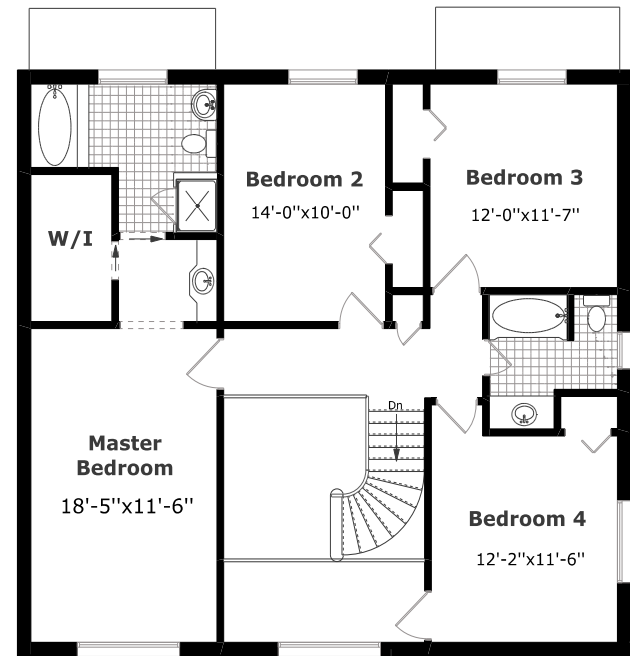


Total Finished Living Space 2711SqFt

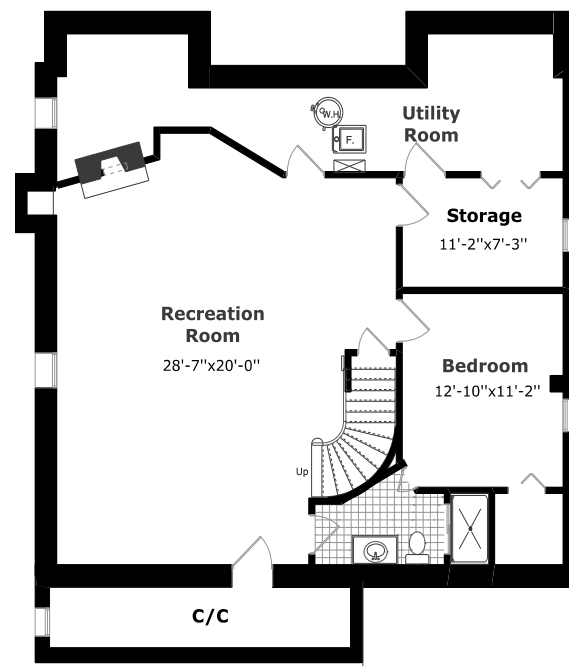
MAIN FLOOR



SECOND FLOOR



LOWER LEVEL



Welcome to...

1095 Mayfair Road

GLEN ABBEY, OAKVILLE

STEVEPACHECO.COM



LISTING INFORMATION

Taxes: \$5,702/2018

Legal Description:

PCL 51-1, SEC 20M278; LT51, PL 20M278; OAKVILLE

“Going Above & Beyond to Exceed your Expectations”



THE STEVE PACHECO REAL ESTATE TEAM
 Century 21 Miller Real Estate Ltd., Brokerage
 #9-209 Speers Road, Oakville, ON L6K 0H5
 905.845.9180 • StevePacheco.com



STEVE PACHECO
Sales Representative





Updated and Modern

Exquisite Family Home in Glen Abbey, Oakville

Looking to call Glen Abbey home? Look no further than this immaculately maintained home backing onto ravine. 1095 Mayfair Road, has everything you need and more. Original owner home with nothing but the best pride of ownership that can be found. Beautiful curb appeal with newer garage doors, front entry system and aggregate driveway. 56' wide ravine lot. Gleaming hardwood flooring throughout the main level. Separate formal Living, Dining and Family rooms. Upgraded eat-in kitchen with massive island and granite countertops, stainless steel appliances including gas range, under cabinet and pot lighting, pass through to Dining room and a wall of windows with a walkout to deck and ravine, make this kitchen any gourmet's favourite room in the house. Family room with brick gas fireplace and a second walkout to deck and ravine. Main floor laundry and a spacious powder room with large bright window make this main floor a true delight. The upper level boasts 4 large bedrooms with upgraded carpeting and a 4 piece main bathroom. The master bedroom suite features a walk-in closet and a recently updated spa-like bathroom with his/her sink and vanity space, separate glass shower and soaker tub. Fully finished lower level with rec room with oversized gas fireplace, bedroom/nanny suite, 3 piece bathroom, office, storage room and cantina. All windows replaced and with warranty, R50 insulation, new roof 2015, new eaves, fascia and downspouts. Located in the the top school district, St Matthew's #1 and Abbey Park High School #1. Close to all other amenities, walking trails, Glen Abbey Golf Course, shopping, restaurants, transit, new hospital & QEW.



Stylish and Elegant

