

STEVEPACHECO.COM

Welcome to...

4483 Victory Court

BURLINGTON



**STEVE PACHECO**  
Sales Representative



**SHELLEY ANN SHARPE**  
Sales Representative



# Stunning Townhouse In South-East Burlington

Everything you could want and more!!! Located in sought after South-East Burlington, this Longmoor community home offers every update you need. From the quiet child-friendly cul-de-sac to the envious rear yard you will be wanting to call this one home before you leave the main level. This immaculate townhome features a covered front porch, single car garage and a hard-to-find 2 car driveway (parking for 3). Upon entry you will find a bright and spacious 1,437 square foot home. Solid hardwood flooring throughout the main level. Updated open concept Kitchen with granite counter ('15) and stainless steel appliances ('15). Living and Dining area are open with a newer sliding glass door ('15) walkout to incredible rear yard. A modern 2 piece powder room ('16) finishes the main level off beautifully. The upper level showcases 3 large bedrooms and a fully updated 4 piece bathroom ('15). The lower level is fully finished with a generous sized rec room, laundry room, storage room and cold cellar. Roof approximately 4 years old. Furnace ('15). Enjoy warm summer nights on the amazing and large composite deck ('16) overlooking green space and walking path. The neighbourhood boasts every amenity you could need. Walk to schools, shopping, restaurants, Go Train, biking and walking trails, library, minutes to QEW and rec centre.







Powder  
Room



Stunning  
Kitchen



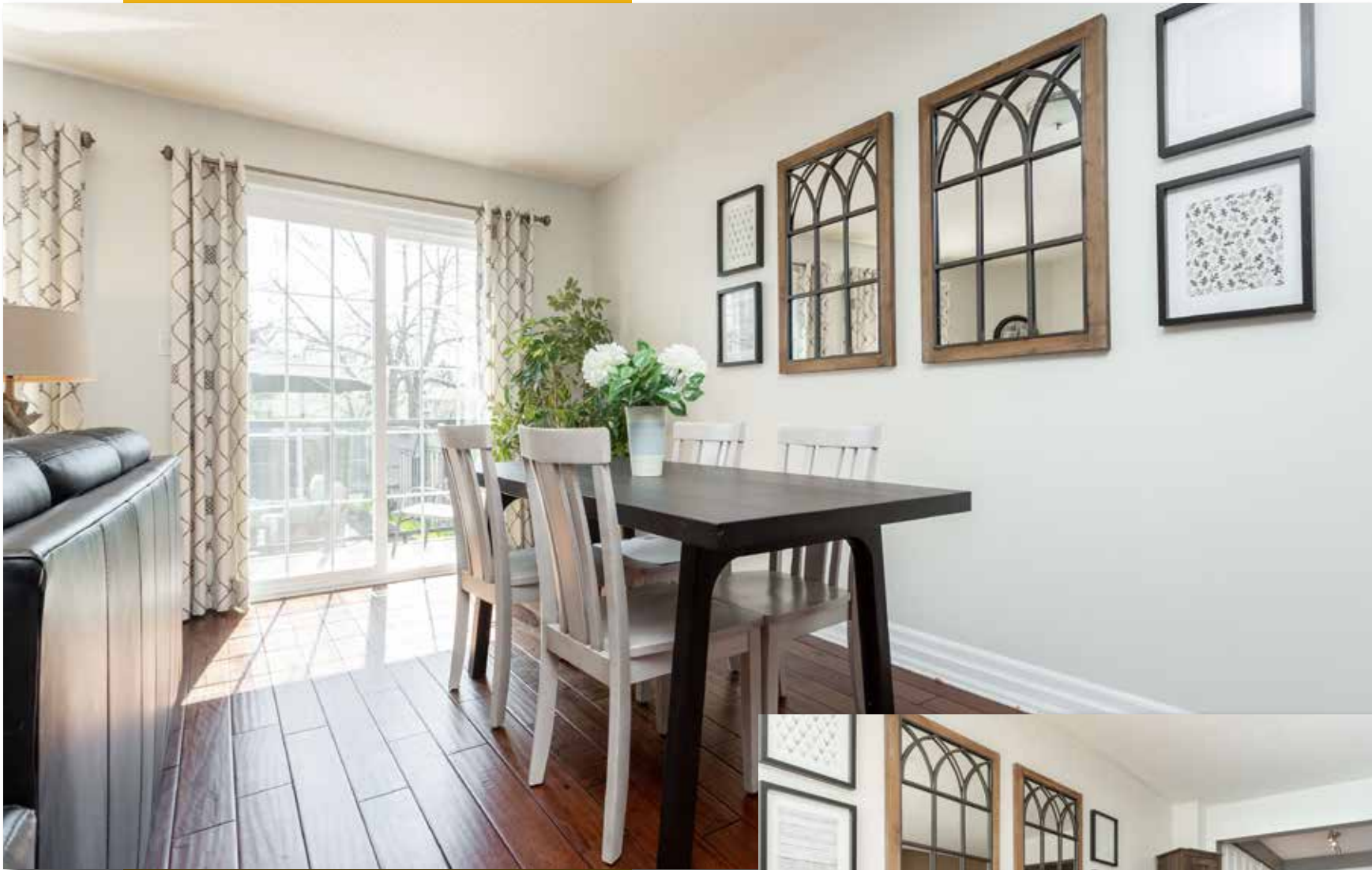




Living  
Room







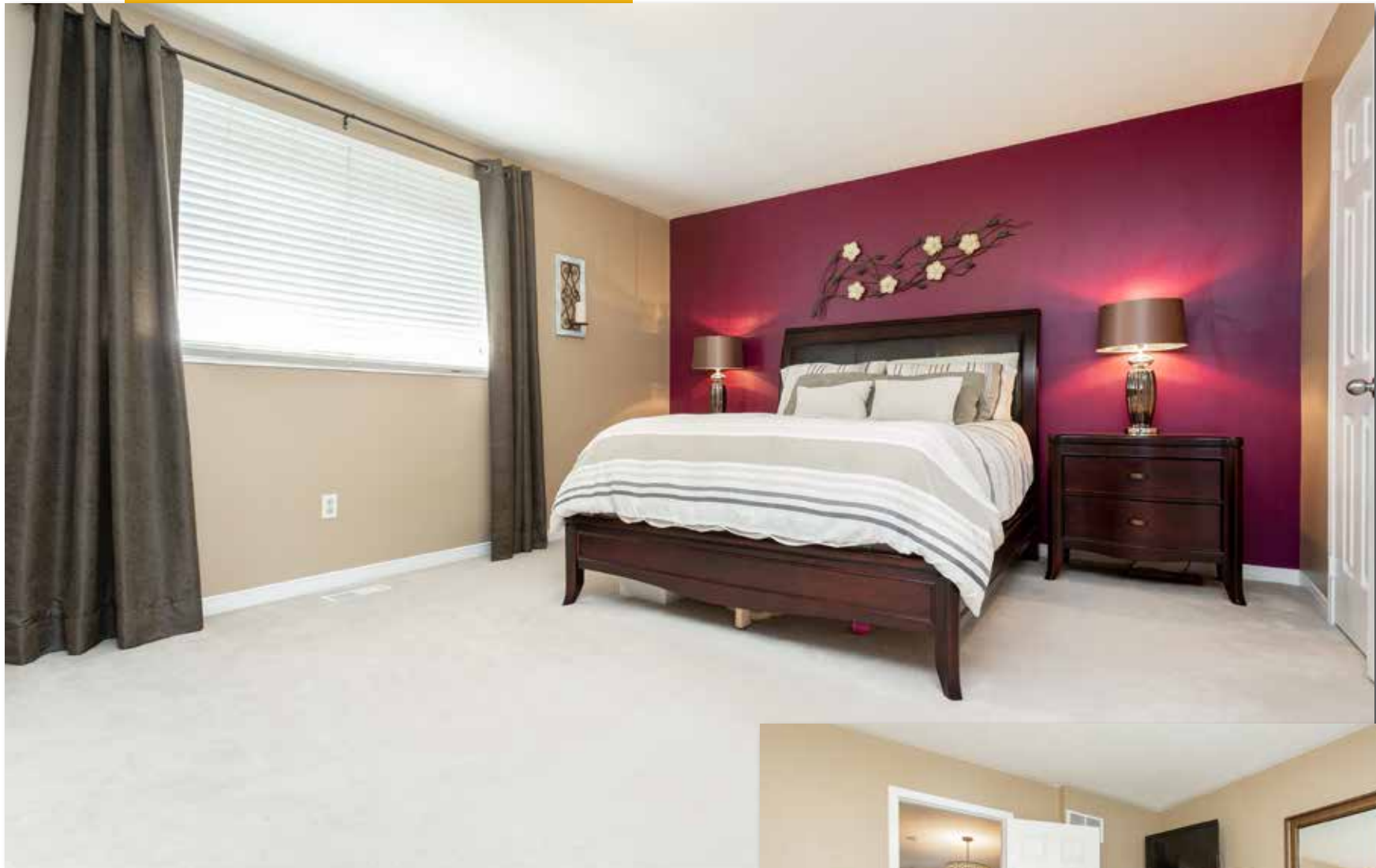
Dining  
Room







Family  
Bathroom



Master  
Bedroom



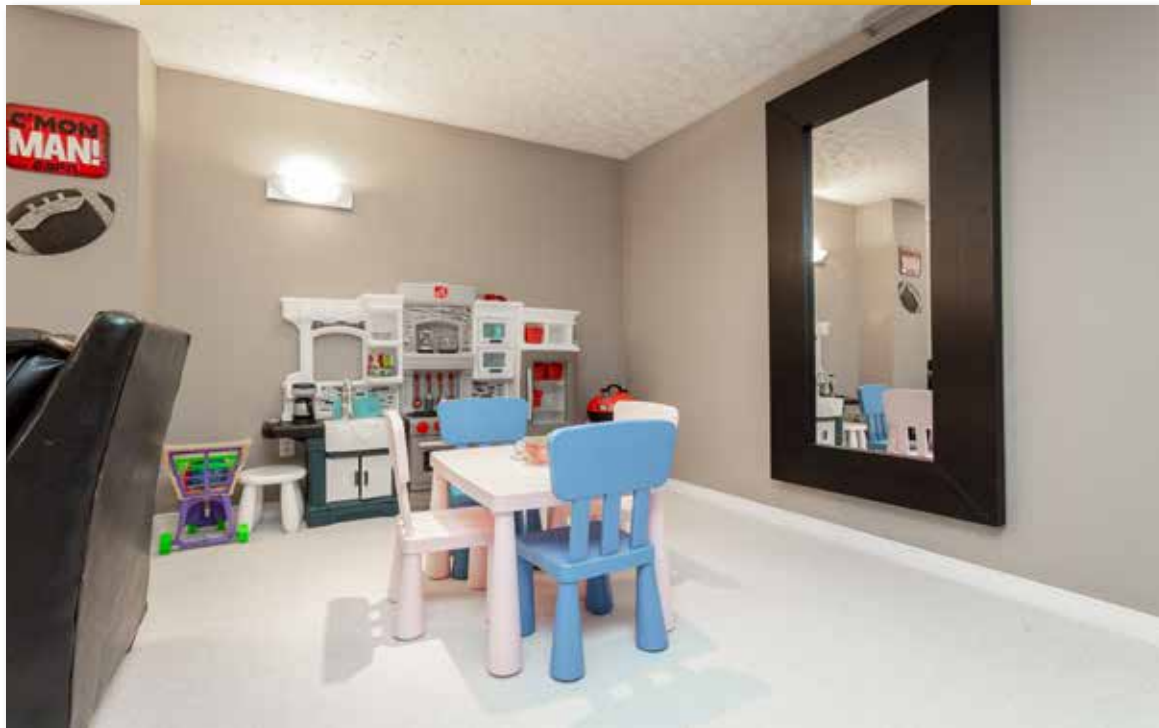
# Additional Bedrooms





Finished  
Lower Level







Fantastic  
Rear Deck

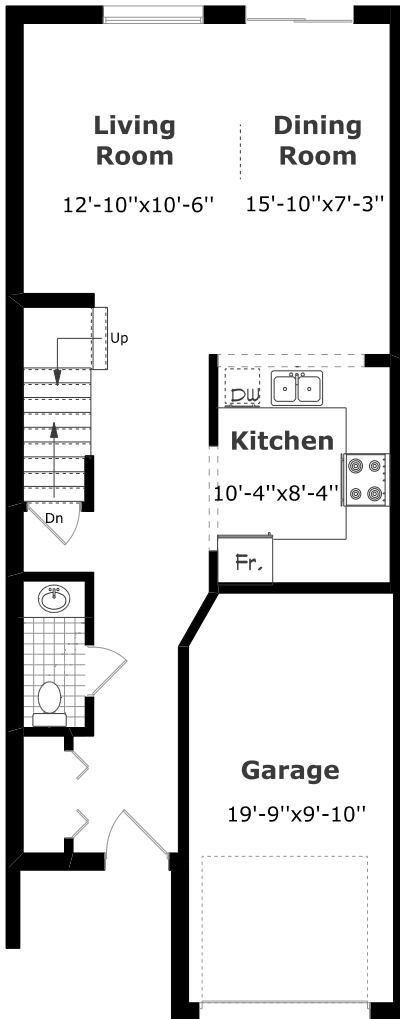


Overlooking  
Green Space



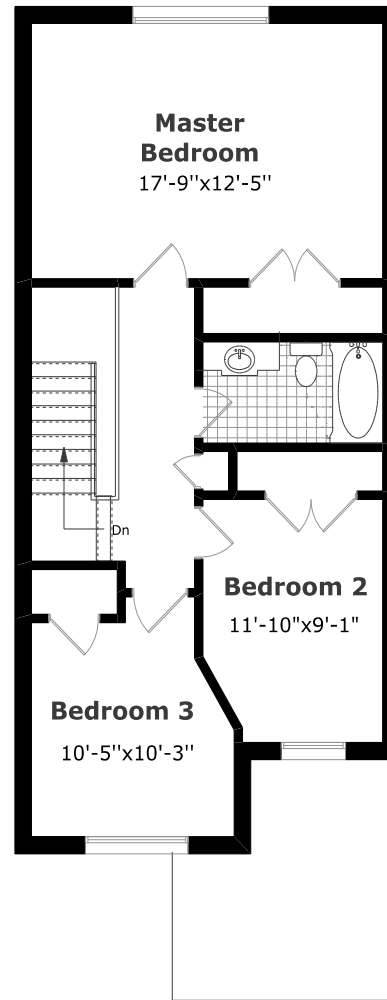
Total Above Grade Square Footage: 1437SqFt

MAIN FLOOR



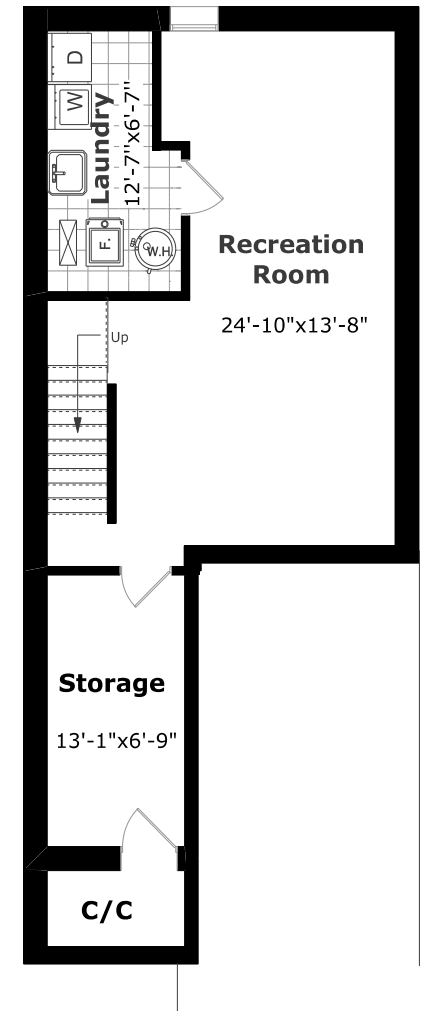
664.2 sq. ft. +  
220.2 sq. ft. (Garage)

SECOND FLOOR



773.5 sq. ft.

LOWER LEVEL



687 sq. ft.

LISTING INFORMATION:

Taxes: \$3,037/2019

Legal Description:

LOT 14, PLAN 20M670, BURLINGTON

“Going Above & Beyond to Exceed your Expectations”



**THE STEVE PACHECO REAL ESTATE TEAM**

Century 21 Miller Real Estate Ltd., Brokerage  
#9-209 Speers Road, Oakville, ON L6K 0H5

905.845.9180 • [StevePacheco.com](http://StevePacheco.com)

