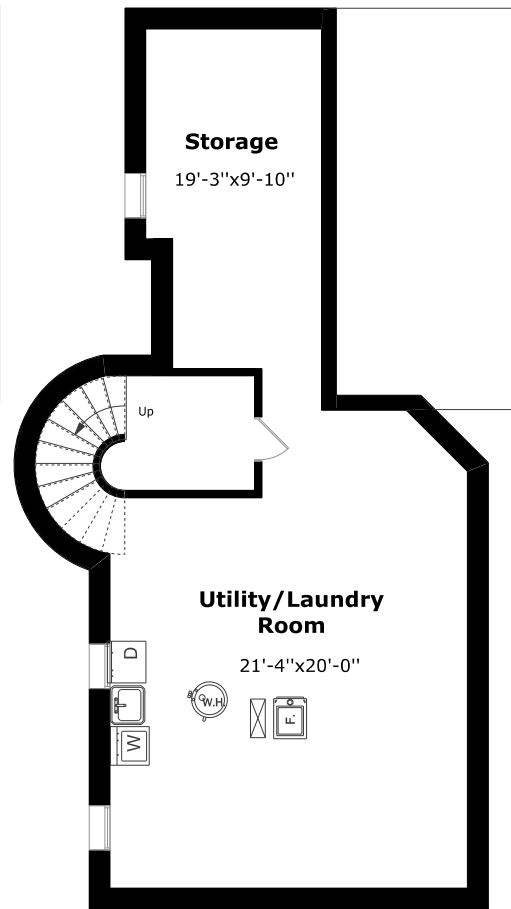
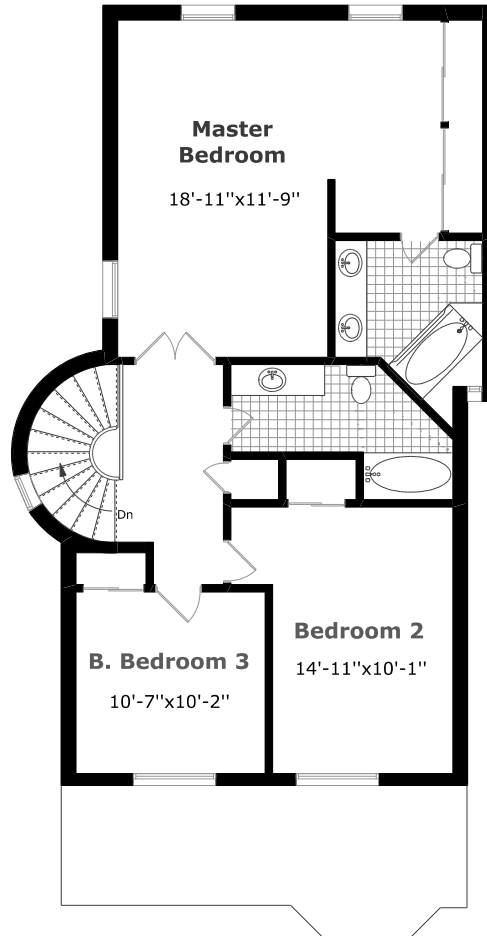
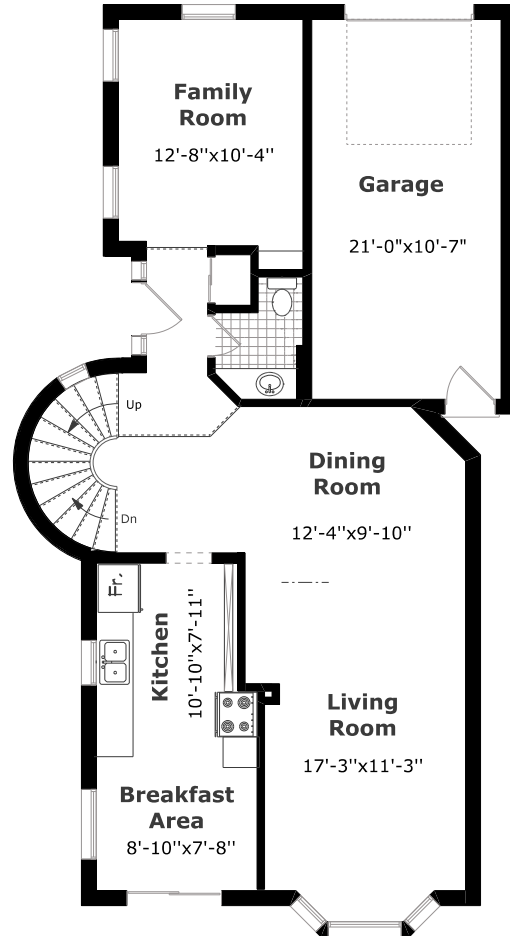


Frontage: 66.62 ft Depth: 91.15 ft

**Main Floor Plan**  
921.2 sq. ft. +  
252.2 sq. ft. (Garage)

**2nd Floor Plan**  
1,000.5 sq. ft.

**Basement Plan**  
921.2 sq. ft.



**LISTING INFORMATION**

Taxes: \$3,243/2019

Legal Description:

PCL BLOCK 104-1, SEC M245 ; PT BLK 104, PL M245 , PART 8, AND 22 , 20R5626 , S/T PT 22, 20R5626

“Going Above & Beyond to Exceed your Expectations”



STEVE PACHECO REAL ESTATE  
Century 21 Miller Real Estate Ltd., Brokerage  
#9-209 Speers Road, Oakville, ON L6K 0H5  
905.845.9180 | StevePacheco.com

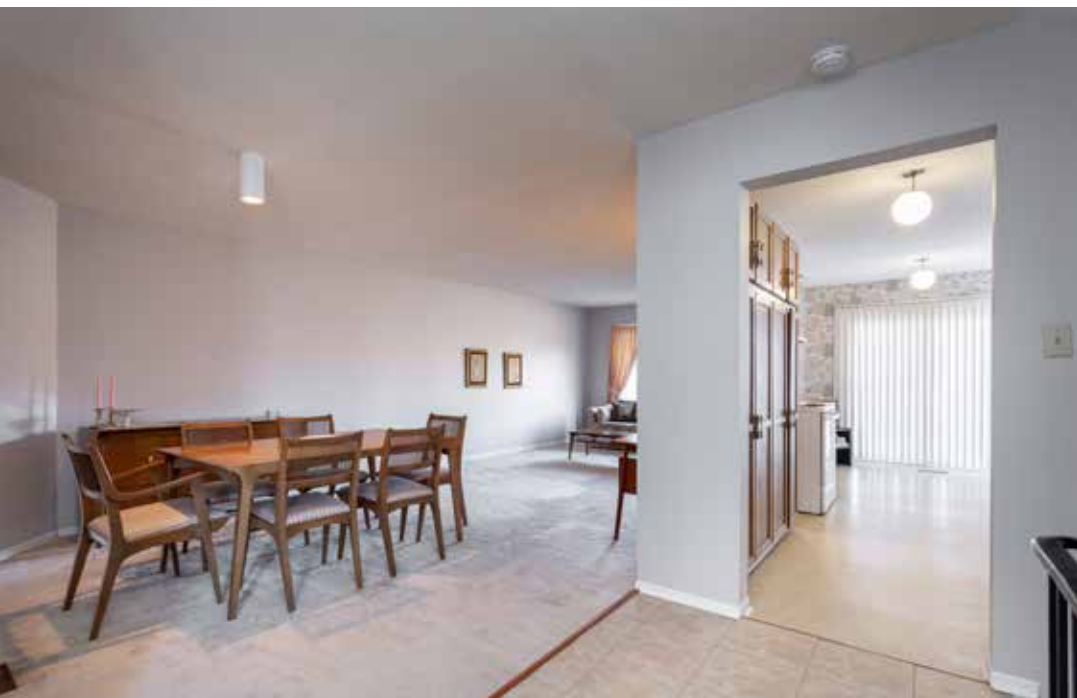


Welcome to...  
**1011** Runnymead Crescent  
OAKVILLE



**STEVE PACHECO**  
Sales Representative





### Bright and Spacious

## Spacious Home in Glen Abbey, Oakville

Welcome to 1011 Runnymede Crescent located in the prestigious Glen Abbey neighbourhood of Oakville. This FREEHOLD end unit backing onto a park offers 3 bedrooms, 2.5 bathrooms with rare backyard access through garage pass through. This spacious home is over 1900 sqft and is attached at garage only on one side. The main floor has a large living/ dining room combo with a library/den/family room and a sun filled eat-in kitchen with walk out to the rear yard. The second level boast a large master bedroom with French doors, a wall of closet space and a 5 piece bath. Two additional generous sized bedrooms and a 4 piece bath finish the second level. Updates include: roof, windows and furnace.

Located in a sought after school district: Walking distance to the top rated St. Matthew school, Abbey Lane school/ Abbey Park HS.

Surrounded by parks & walking trails. Minutes to new hospital, rec center, library, QEW, GO transit & downtown Oakville.

