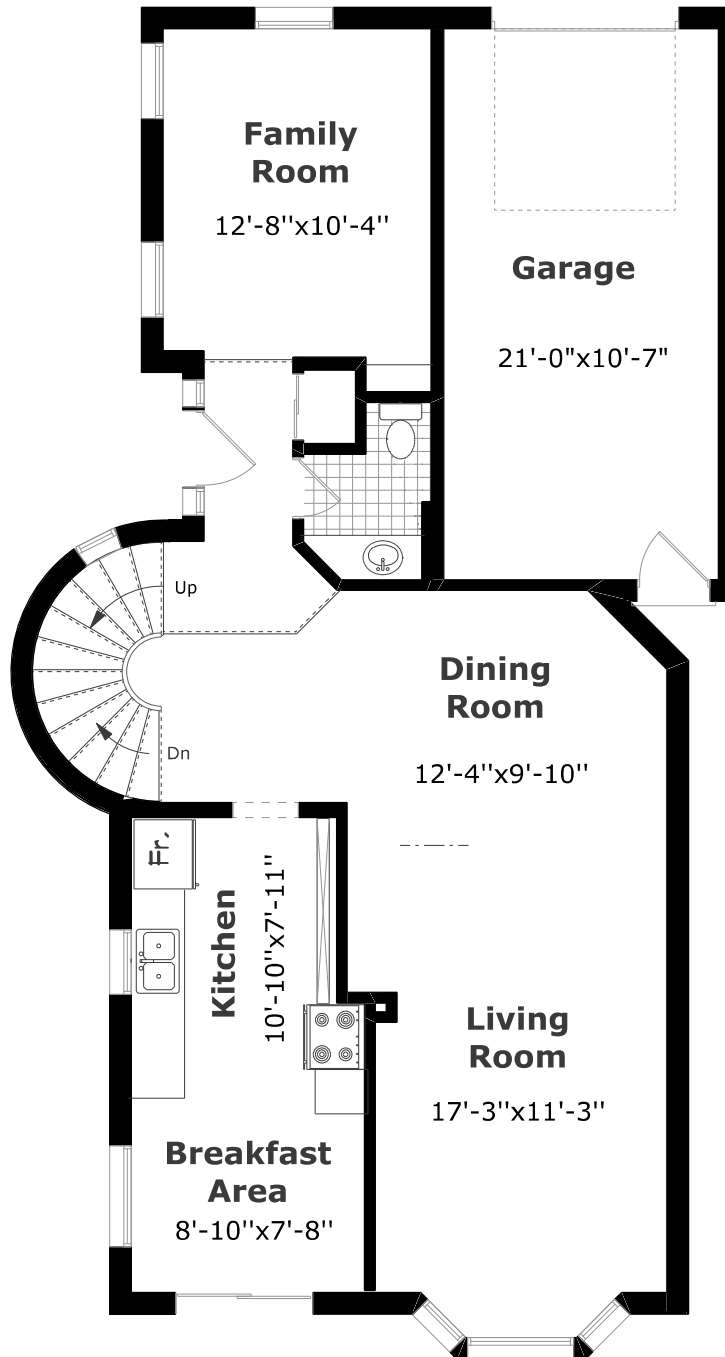


1011 Runnymead Crescent

Scale (ft) 0 5 10 15 20 25

Scale (M) 0 1 2 3 4 5 6 7

January 2020



Main Floor Plan

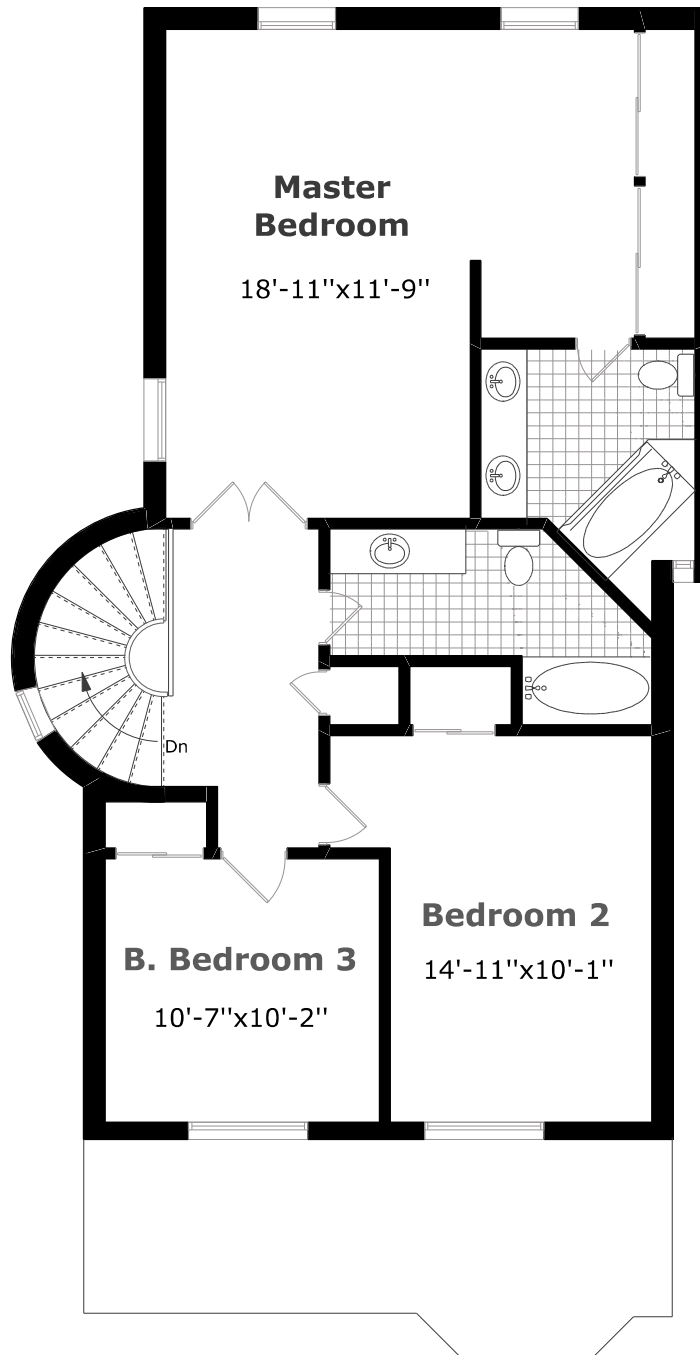
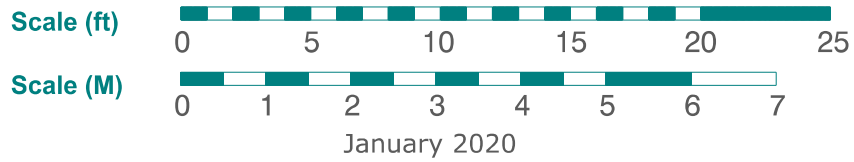
921.2 sq. ft. +

252.2 sq. ft. (Garage)



Measurements may not be 100% accurate. Floor Plans provided for illustrative purposes only. Room sizes not used to calculate area.

1011 Runnymead Crescent



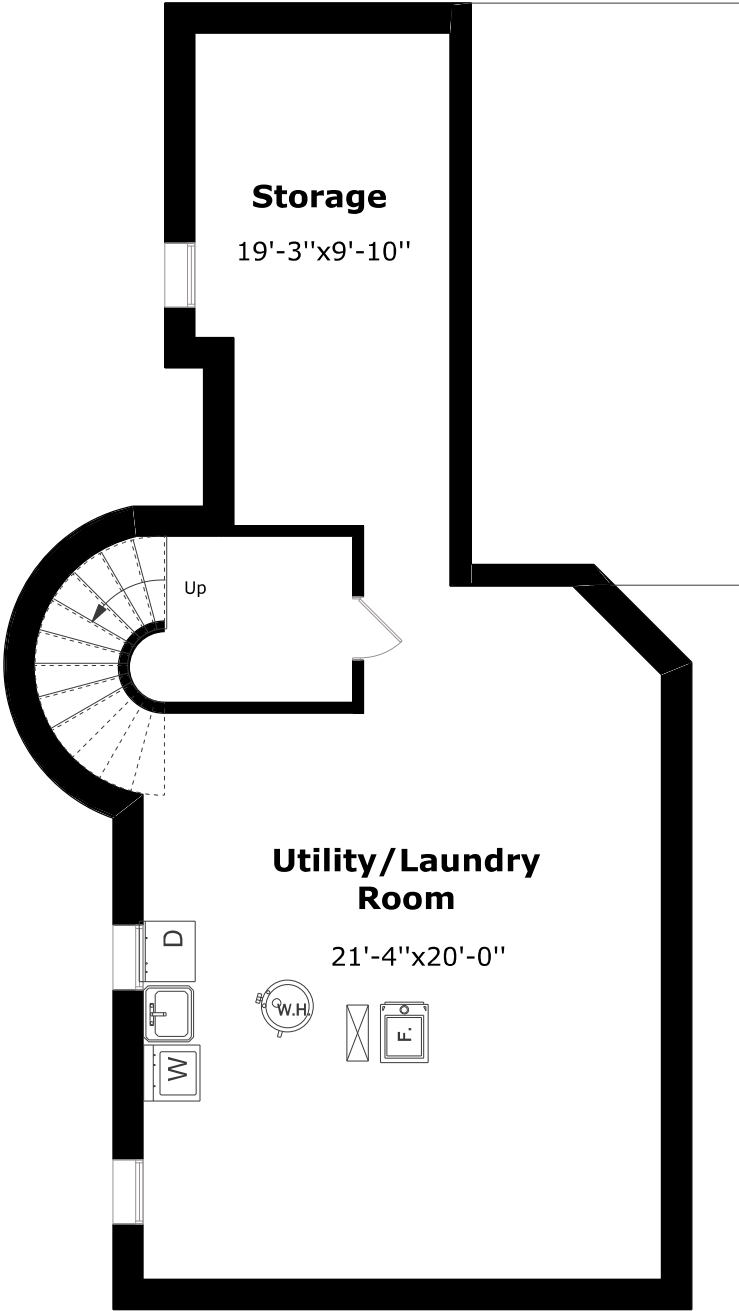
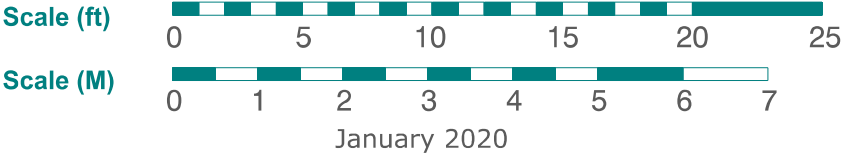
2nd Floor Plan

1,000.5 sq. ft.



Measurements may not be 100% accurate. Floor Plans provided for illustrative purposes only. Room sizes not used to calculate area.

1011 Runnymead Crescent



Basement Plan

921.2 sq. ft.



Measurements may not be 100% accurate. Floor Plans provided for illustrative purposes only. Room sizes not used to calculate area.